



1 KENDALL SQUARE

CAMBRIDGE

+/- 1,950 SQ FT





BUILDING INFORMATION

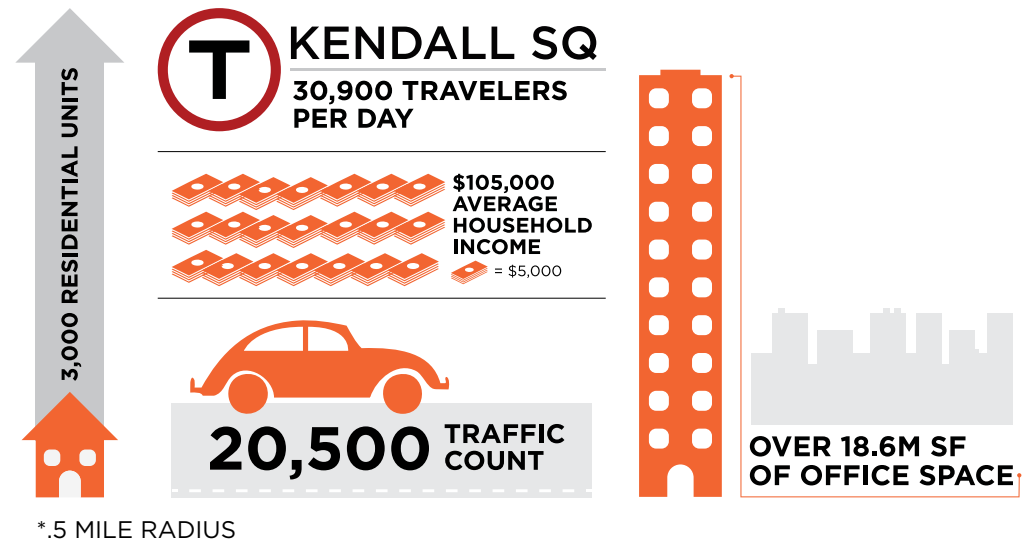


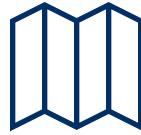
KENDALL SQUARE:

- Located in Cambridge
- Surrounded by education, laboratories, start-ups, and technology companies
- 80,000 daytime population
- 4.9 million SF Office
- 4 million SF Lab

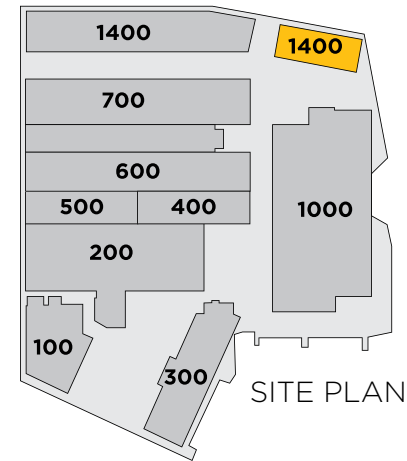
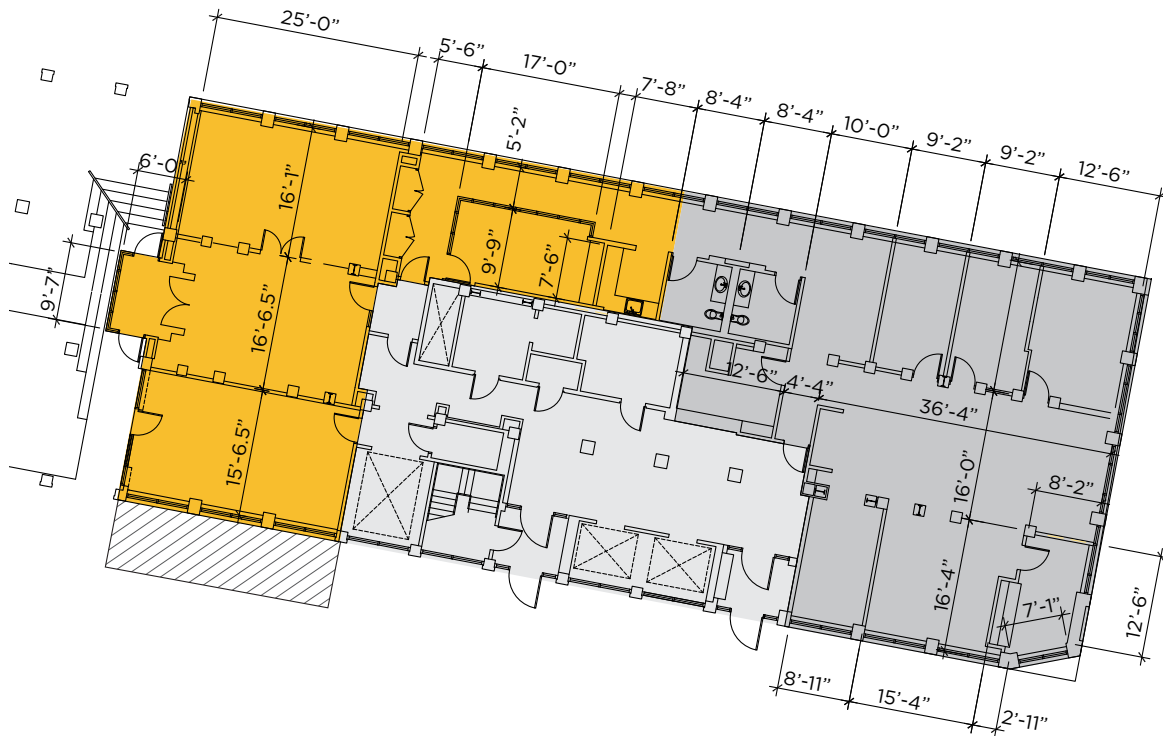
PREMISES: +/- 1,950 SQ FT plus dedicated patio.

POSSESSION: Delivery Arranged upon Lease Execution.





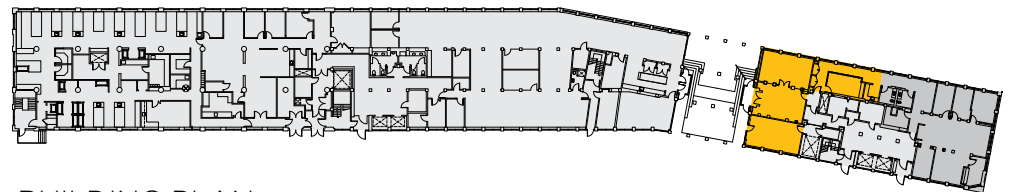
AVAILABILITY



KEY

■ Available Space ■ Back Space

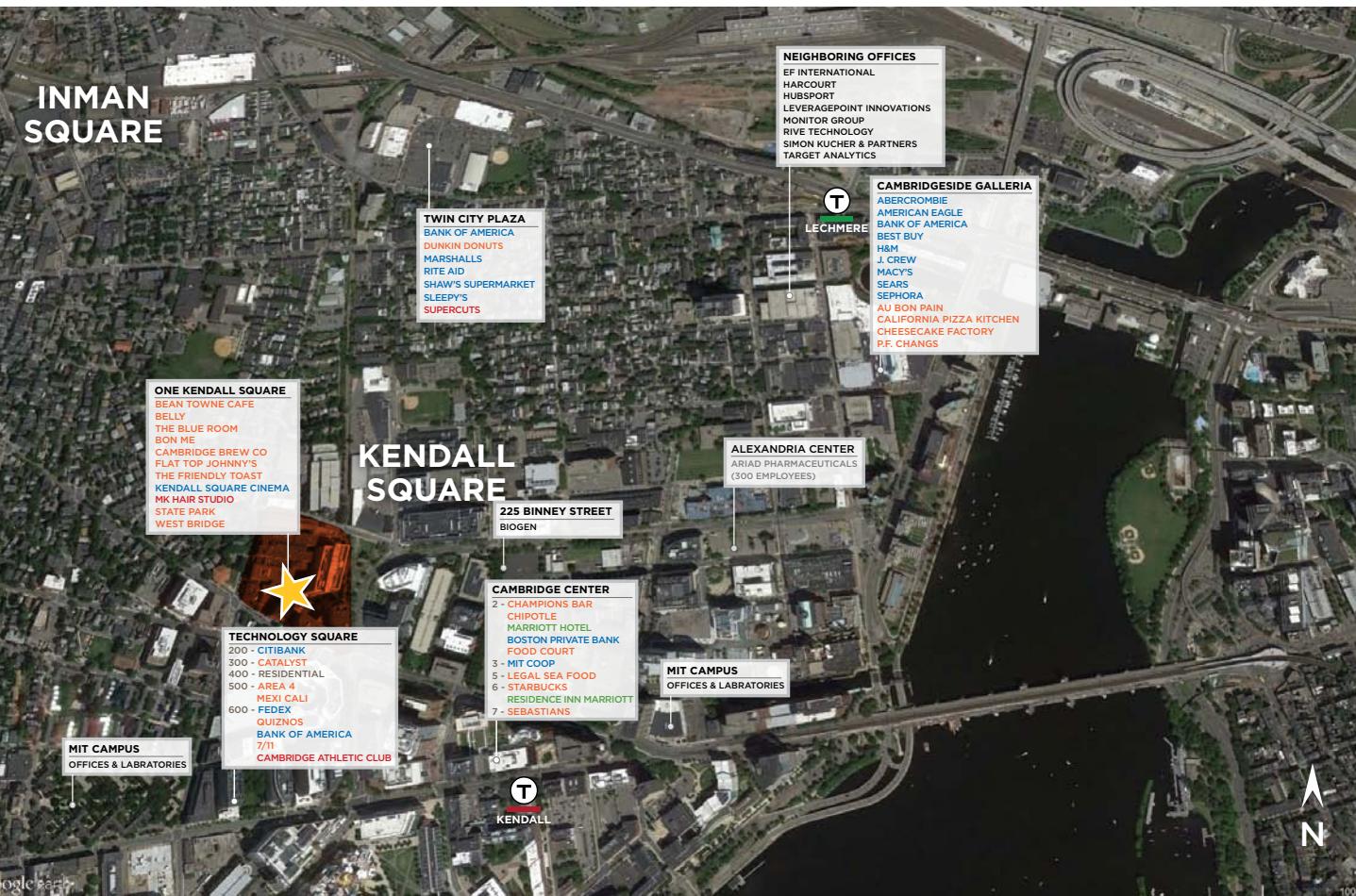
SQUARE FOOTAGE: +/- 1,950 SQ FT + Patio



BUILDING PLAN



KENDALL SQUARE TENANTS



NEIGHBORING COMPANIES

- Akamai Technologies
- Amazon.com
- AT&T Inc.
- Biogen Idec.
- Cambridge Innovation Center
- Equity Residential
- EMC Corporation
- Genzyme
- GlaxoSmithKline
- Google
- HubSpot
- KlingStubbins
- Microsoft
- Moshe Safdie and Associates
- Nokia
- Novartis
- Pfizer
- Verizon
- Yahoo

EDUCATION

- Harvard
- Massachusetts Institute of Technology
- Le Cordon Bleu College of Culinary Arts