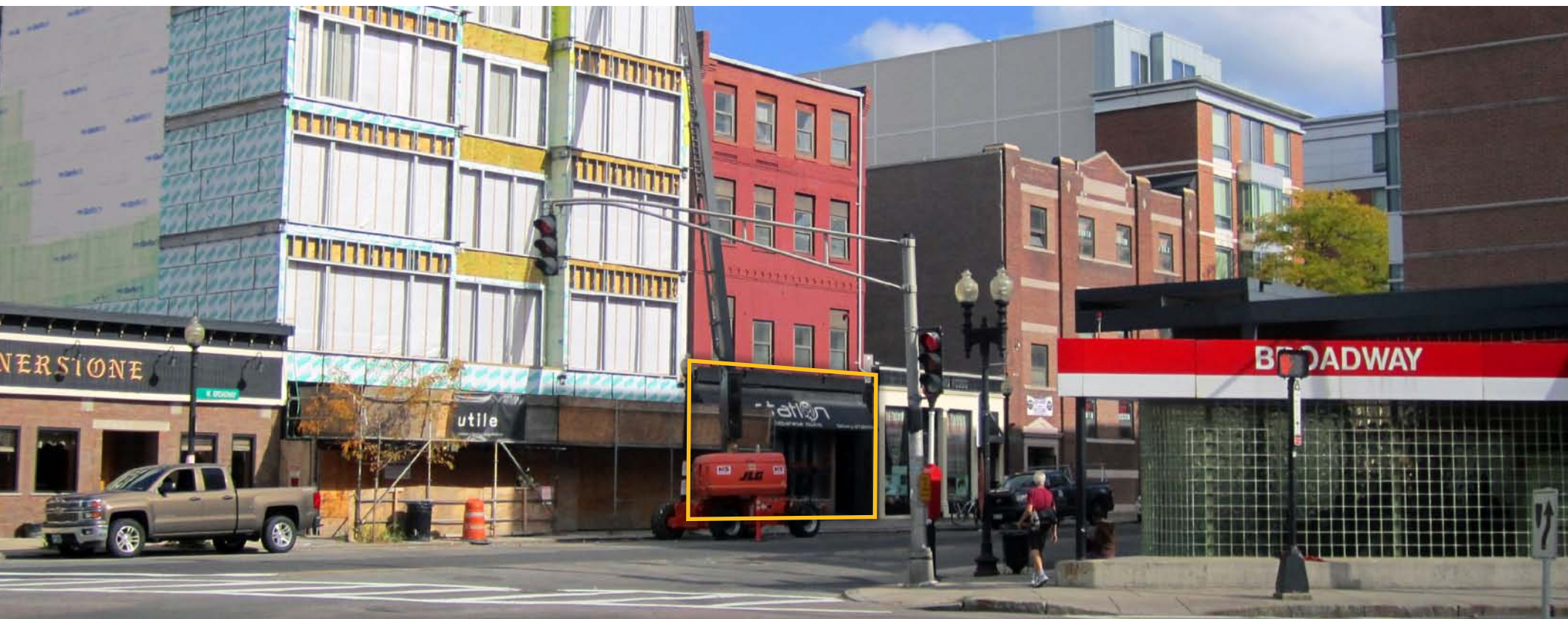




28 WEST BROADWAY

SOUTH BOSTON RESTAURANT SPACE

+/- 1,500 SQ FT





BUILDING INFORMATION



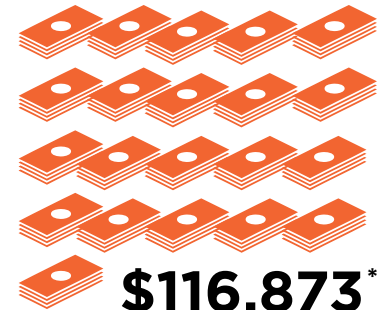
28 W BROADWAY:

- Sitting directly across from South Boston's Broadway T Station
- Steps from State Street Corp's new A Street office tower
- **Luxury Residential Hub:** Macallen, Court Square Press & Allele lofts, Thompson Hotel (156 keys to be constructed)
- **Notable Neighbors:** Starbucks, Stephi's in Southie, Dunkin' Donuts, Franklin Café, Handle Bar Spin, Social Wines, South Boston Yoga

PREMISES: +/-1,500 SQ FT + finished basement



T BROADWAY
10,528 TRAVELERS
PER DAY

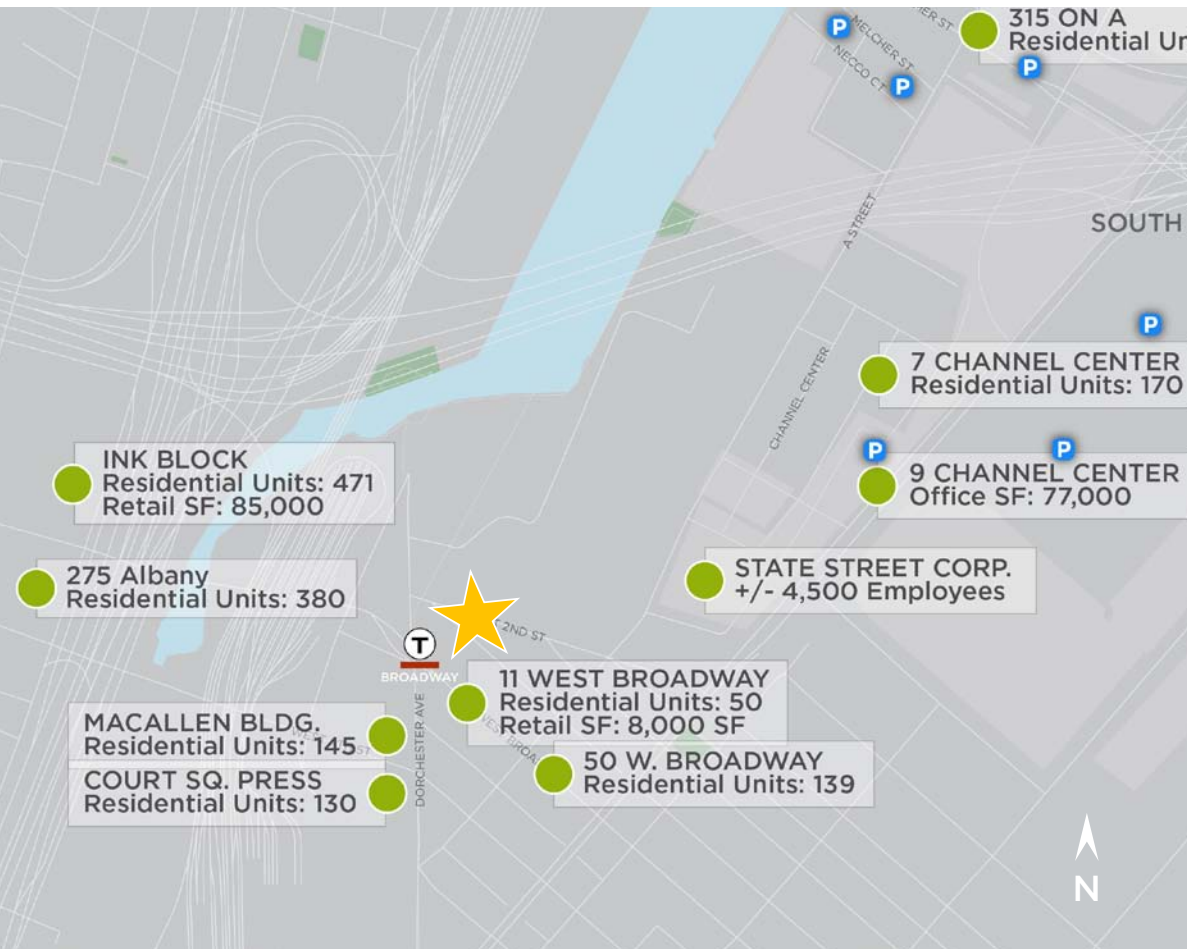


\$116,873*
AVERAGE INCOME

* .25 mile radius



SEAPORT TENANTS



RESTAURANTS

- Amrheins
- Barking Crab
- Barlow's
- Barrington Coffee
- Bastille Kitchen
- Blue Dragon
- Cornerstone Pub
- Del Frisco's
- Drink
- Empire
- Flour
- Freshii
- Legal Harborside
- Legal Test Kitchen
- Lucky's
- Menton
- Morton's
- Papagayo
- Rosa Mexicano
- Row 34
- Salvatore's
- Sam's
- Sportello
- Starbucks
- Stephi's
- Strega
- Tavern Road
- The Franklin Cafe

RETAIL/FITNESS

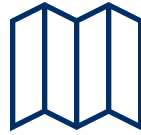
- 7-Eleven
- Bee's Knees Supply Co.
- Boston Private Bank
- The Club by George Foreman
- LOUIS
- Santander
- Social Wines
- The Handle Bar
- Trillium Brewery
- Whole Foods (und. construction)

INSTITUTIONS

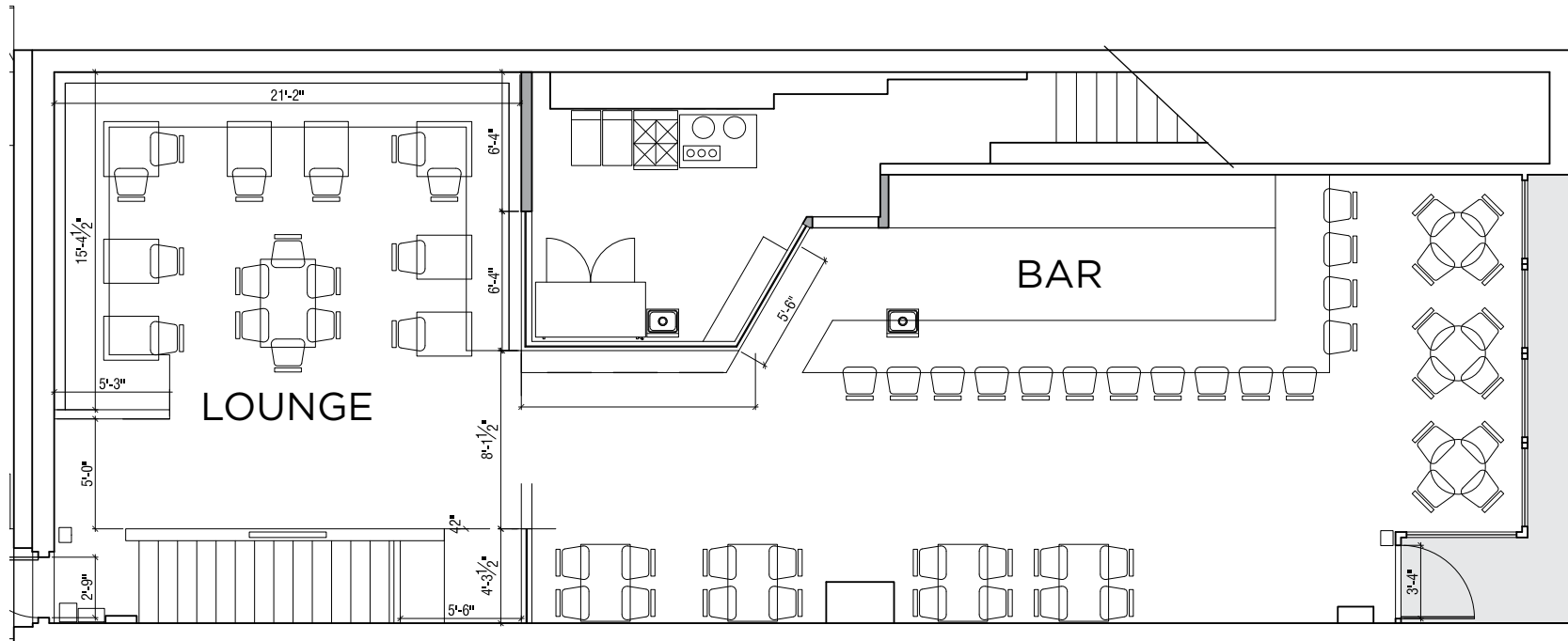
- Blue Hills Bank Pavilion
- Boston Convention Center
- Boston Design Center
- Gillette
- Institute of Contemporary Art
- Moakley Courthouse
- State Street Corporation

HOTELS

- Envoy Hotel (und. construction)
- Intercontinental Boston
- Marriott Residence Inn
- Renaissance Boston
- Seaport Boston Hotel
- Westin Boston Waterfront



AVAILABILITY



KEY

Available Space

SQUARE FOOTAGE: +/- 1,500 SQ FT